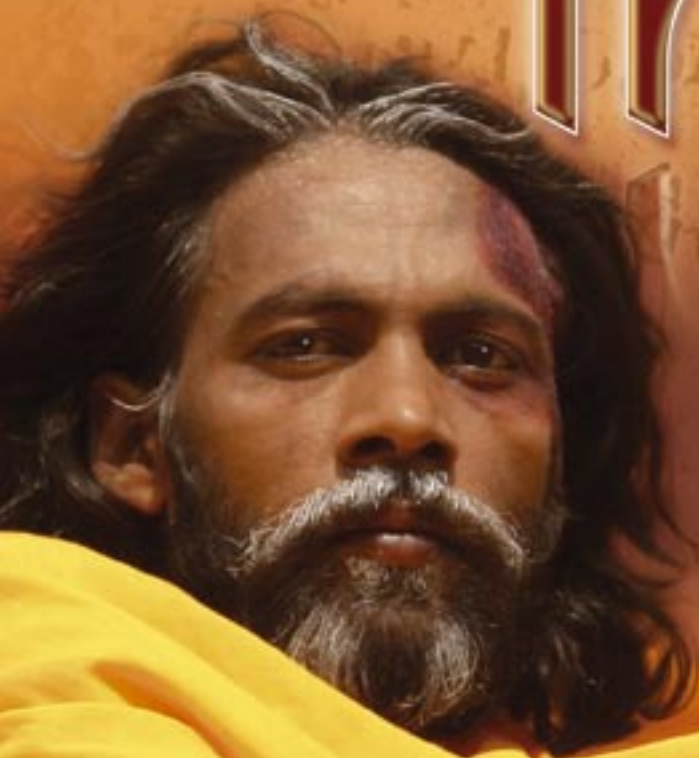


Secrets of the Taj Mahal

# 'great' india

Ashoka – Buddha's Warrior



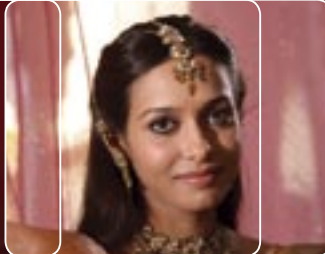
#### Facts for your success

- ▷▷ Key historical moments that help us understand the India of today
- ▷▷ Portrayal of a brutal ruler who became a king of peace and model for Gandhi
- ▷▷ In-depth exploration of the Taj Mahal, the very symbol of India





# great india



India has set itself extraordinary goals: power, clean water, a health-care system for its more than one billion people... Is this unrealistic? A look at two great moments of India's past shows us to what point the subcontinent nation can implement change and realize tremendous accomplishments: the sweeping social and religious reforms of Ashoka, "Buddha's Warrior," and the construction of one of the world's architectural wonders, the Taj Mahal.

Gandhi's great model, a symbolic figure for modern India, "Ashoka – Buddha's Warrior" begins as a blood-thirsty ruler, but becomes a sovereign of peace. In 261 BC, Ashoka, the mightiest king of the Maurya dynasty, carries out a savage campaign of conquest against a neighboring kingdom that results in over 100,000 deaths. Appalled at the slaughter, Ashoka converts to Buddhism, helping it become a global religion. In this documentary, indologists such as Prof. Krishna Mohan Shrivastava of New Delhi

and Prof. Harry Falk of Berlin reconstruct the key events in Ashoka's life with the help of CGI. They examine, for instance, the ruler's revolutionary system of spreading his views on justice and non-violence by having them engraved on 13-meter high columns dispersed throughout his realm.

"Secrets of the Taj Mahal" focuses on the very symbol of India, a monument to a grand passion. It is the story of the mighty 17th-century Mughal Emperor Shah Jahan and of his undying love for his wife Mumtaz Mahal. We witness magnificent ceremonies at court, peek into the secret world of the harem, and accompany Shah Jahan on a military campaign. The construction of the Taj Mahal – ordered by Shah Jahan after the death of his beloved wife – is depicted in a combination of documentary elements, re-enactments and CGI. Experts such as Prof. Ebba Koch and New Delhi historian Prof. Najif Haider explain the significance of the monument's architecture. By penetrating deep into the symbolism of the Taj Mahal, the film deciphers its spiritual code as a testimony to a never-ending love.

## Documentaries

Format

1 x 47' + 1 x 52' HD

Writer

Stephan Koester, Alexander Hogg

Director

Stephan Koester

Producer

Christian Feyerabend

Executive Producer

Uwe Kersken

Address

ZDF Enterprises

Sales, Merchandising and Coproductions

Lise-Meitner-Strasse 9

D-55129 Mainz

Contact

programinfo@zdf.de

www.sales.zdf-enterprises.de

Phone: +49 (0) 6131 - 991 281

Fax: +49 (0) 6131 - 991 259